



## Rabbit anti Fibrinogen (gamma) Polyclonal Antibody

Alternative Name(s): fibrinogen gamma chain

### Order Information

- **Description:** Fibrinogen (gamma)
- **Catalogue:** 600-800
- **Lot:** See label
- **Size:** 100ug/200ul
- **Host:** Rabbit
- **Clone:** nan
- **Application:** IHC(P), WB
- **Reactivity:** Hu, Ms

### **ANTIGEN PREPARATION**

A synthetic peptide corresponding to the N-term portion of Fibrinogen gamma protein. This sequence is identical to human, and mouse.

### **BACKGROUND**

FGG, A 437 aa protein encoded by this gene is the gamma component of fibrinogen, a blood-borne glycoprotein comprised of three pairs of non-identical polypeptide chains. Following vascular injury, fibrinogen is cleaved by thrombin to form fibrin which is the most abundant component of blood clots. In addition, various cleavage products of fibrinogen and fibrin regulate cell adhesion and spreading, display vasoconstrictor and chemotactic activities, and are mitogens for several cell types. Mutations in this gene lead to several disorders, including dysfibrinogenemia, hypofibrinogenemia and thrombophilia. Alternative splicing results in two transcript variants encoding different isoforms, gamma-A is the predominant, shorter but has distinct C-term compared to gamma-B.

### **PURIFICATION**

The Rabbit IgG is purified by Epitope Affinity Purification

### **FORMULATION**

This affinity purified antibody is supplied in sterile Phosphatebuffered saline (pH7.2) containing antibody stabilizer

### **SPECIFICITY**

This antibody recognizes ~47 kDa of Fibrinogen gamma protein. It reacts with human and mouse. The other species are not tested.

### **STORAGE**

The antibodies are stable for 24 months from date of receipt when stored at -20oC to -70oC. The antibodies can be stored at 2oC-8oC for three month without detectable loss of activity. Avoid repeated freezing-thawing cycles.

### **APPLICATIONS/SUGGESTED WORKING DILUTIONS\***

- Western Blot: 0.1-1 µg/ml
- ELISA: 0.01-0.1 µg/ml
- Immunoprecipitation: 2-5 µg/ml
- IHC: 2-10 µg/ml
- Flow cytometry: Not tested
- Molecular Weight: 47.0
- Positive Control: Kidney Tissue
- Cellular Location: Cell Membrane

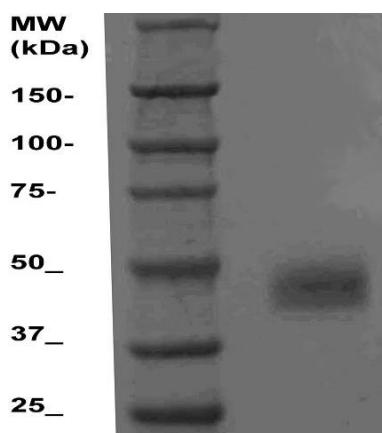
\*Optimal dilutions should be determined by researchers for the specific applications.

### **FOR RESEARCH USE ONLY.**

AbboMax, Inc 2528 Qume Drive, Suite 8, San Jose, California 95131, USA  
1 408-573-1898 (Tel). 1 408-573-1858 (Fax). [www.abbomax.com](http://www.abbomax.com) [info@abbomax.com](mailto:info@abbomax.com)



## DATA ATTACHMENTS



Western Blot: The Cell lysate derived from mouse liver was resolved onto 10% SDS-PAGE, transferred onto NC membrane, and immunoprobed by Rabbit anti Fibrinogen-gamma (Cat#600-800) at 1:500. An immunoreactive band around ~47 kDa was observed.

## REFERENCES

### FOR RESEARCH USE ONLY.

AbboMax, Inc 2528 Qume Drive, Suite 8, San Jose, California 95131, USA  
1 408-573-1898 (Tel). 1 408-573-1858 (Fax). [www.abbomax.com](http://www.abbomax.com) [info@abbomax.com](mailto:info@abbomax.com)